

TOSTOCK CHRONICLE

More details and the latest up to date information, including a full colour version of the Chronicle

www.tostock.pc.org

Taken on 24 December 2020. After the rain.

By Jim Langlois



Taken on the Black Bourn Nature Reserve off of Norton Road.

Taken at the Black Bourn Bridge on Norton Road

Despite Lockdown and extreme weather

New life begins



Nice to know there is still joy coming into this world in these strange times we are all experiencing!



**Complete the
VILLAGE HALL
SURVEY!
£50 John Lewis
Voucher to be won!**

See four page pull-out : 10-13

Contacts in our Community

www.tostock.pc.org

Tostock Parish Councillors

Parish Council email: clerk@tostockpc.org.uk Sharon Burman

Chair: Pip Fletcher pip.fletcher2@btinternet.com 01359 270456
ViceChair: Julian Kearsley juliankearsley@btinternet.com
David Blundell Tostock.design@btinternet.com
Graham MacDowall crispincottage@hotmail.com
Nick Cytacki nickcytacki@gmail.com 01359 271481
Peter Boland Peter.boland@gmail.com
Olivia Boland olivia@tostockanimalparks.co.uk 01449 616465
Marie Johansson oldhallstables@btinternet.com
Jane Storey Janestorey@suffolk.gov.uk

NEXT EDITION: Is for

April/May 2021

Please may I have your
contributions on or
BEFORE 19th March

preferably in word or publisher format, much appreciated.

shirley.nice@btinternet.com

01359 271727

Footpath Officers

Adrian Malcom & John Cytaki

Tree Officer

VACANT

Litter Picker

Jim Langlois jimlanglois@btinternet.com 01359 270456

Suffolk County Council

Jane Storey JaneStorey@suffolk.gov.uk 01359 240555

St Andrews Church

Rector: Katherine Valentine kavalentine677@gmail.com 01359 235095

Friends/Warden: Jeanne O'Reilly 01359 270337

Bell Ringers: Sue Marriott 01359 270143

Poor's Estate: Sharon Markell 01359 271190

Village Hall

Chair: Graham MacDowell crispincottage@hotmail.com

Hall Bookings: Doreen Buckle tostocktvh@hotmail.co.uk 01359 270605

Pub

The Gardners: Steve & Jill Gardner 01359 270460

Clubs

Past & Present: Sarah Scully 01359 270482

Tennis Club: Elizabeth Dunn ejd1@talktalk.net 01359 270270

Susie Walton susiewalton85@gmail.com 07793406076

Book Club: Julie Harrison 01359 270247

Carpet Bowls: Doreen Buckle 01359 270605

Toddlers: Julie Harrison 01359 270247

Media

Tostock Chronicle: Shirley Nice shirley.nice@btinternet.com 01359 271727

Sarah Reader reader-family@tiscali.co.uk

Jim Langlois- Photography jimlanglois@btinternet.com 01359 270456

Website:

Diane Mathews www.tostockpc.org

Emergency Police/Fire/Ambulance 999

Services

Health

Woolpit Health Centre 01359 240298

Out of Hours 111

West Suffolk Hospital 01284 713000

Samaritans 01284 750000

Drugs Hotline 0800 253 253

Police

Non-emergency 101

Crime Stoppers 555

Leisure

Cineworld 0330 333 4444

Theatre Royal 01284 769505

Apex 01284 758000

Picture House 01284 754477

Travel

Bus: www.travel-galloway.com 01449 766323

Rail:

Dial a Ride 01440 712048

*Anyone wishing to add their email, please get in touch.

Reporting

Anti-social behaviour / bonfires, Environmental Health reporting tool www.midsuffolk.gov.uk/environment.

Potholes, overhanging trees and any other road / roadside issues can be raised on the Highways reporting tool www.suffolk.gov.uk/roads-and-transport.

Information

Suffolk Community Foundation grants@suffolkcf.org.uk

MID-SUFFOLK-Refuse-Recycling-Collection-Schedule-2021-Web-Version.pdf

Current waste collection status: Garden waste (brown bin) collections have been suspended from

Monday 11 January 2021 until further notice.

Hello Everyone

In previous years at about this time, I have been writing to invite you to consider opening your gardens in June. Obviously Open Gardens did not happen in 2020 and we cannot be sure it will in 2021. Meanwhile I have been trying to come up with ideas for what we can do , rather than cannot.



My thoughts are , perhaps we could concentrate on our front gardens and have something on the lines of a viewing called “Over the Garden Wall” , we could invite visitors to view our front gardens, obviously at a safe distance.

Please give me a call on 01359 270787 and let me know what you think.

Looking a little further ahead, something similar with our displays of Christmas lights, followed hopefully by then, with mince pies and mulled wine on the village green.

Looking forward to hearing from you.

Stay Safe and Well.

Gail Moyles

TOSTOCK TIDY DAYS 2021

A Happy New Year to everyone. I was hoping to have been able to give the dates for this year’s Tidy Days.

But with the uncertainty of the length of the Lockdown I have held back. All being well we will be aiming to do four Tidy Days during the year.

In case you are new to the village and are wondering what the Tidy Days are. This initiative was set up under the auspices of the Parish Council with the aim of engaging as many people as possible with improving and maintaining the village whilst having a little fun on the way. There are five of us who sit down and work out the jobs that need to be done (Jim Debenham, Brian Jenkins, Adrian Malcom, Anthony Scully and myself).

We are open to ideas!

We normally have about 30 villagers (young and old) who regularly volunteer. But the more people we have involved the more we can achieve to make Tostock a village that we are all proud of and continue to enjoy living in!

Over the past two years we have kept the footpaths and kerbs swept with excess grass and moss cut back.

Cutting the hedges around the playing fields with the ditch between the playing field and Norton Rod cleared and strimmed. John Lintin regularly cleans all of the road signs around the village.

Once we have a date organised I will put it out in the Chronicle plus email the Volunteers who I have addresses for.

If you are interested in joining or wish to know more please contact me.

Or just come and join us on a Tidy Day, the coffee and cakes at the end are great!

Jim Langlois

Phone No: 01359 270456 or email: jimlanglois@btinternet.com



Ever since the early age of 5, I have always been fascinated by Windmills. The first 40 years of my life, I've lived in 3 different houses all at Gt. Whelnetham. Each time I've moved I became a little closer to Bury St Eds, but have still remained less than a quarter of a mile away from a Windmill. The reason for this is because Whelnetham had 2 mills, the time I'm referring to is the time of the early 50's. Our first home was at the top end of the village, they were the last row of 12 houses called Grove Cottages, before you leave the village and head into Stanningfield. The last 2 buildings were a Water Tower and derelict Post Mill., I can still remember it well. The reason I remember it so well is because the Milkman on just a few occasions used to give us a ride on the back of his milk float – we used to sit at the back amongst the crates with our legs dangling and swinging about all over the place. The trip was from our house to the Mill and back again about ¼ mile where he turned around to go back to his depot. At about the time of 1952 we moved down the road to our second home at Tutelina Road, woe and behold at the bottom of the road was a farm and another Windmill. About two or three years after moving down, the old derelict Windmill was demolished followed by the Water Tower in the late 1950's or early 60's. I remember climbing ¾ the way up the tower until my head hit the bottom of the water tank, that was as far as I dare to go. The last 10 feet of the tank you had an absolute vertical climb up the outside of the tank. I think if I had attempted it I wouldn't have been here today, good job I bottled out. Today I would give someone a small fortune just to have a photograph of the old mill before it became derelict. However, it was the Tutelina Mill which inspired me most towards Windmills. I can remember hearing the diesel engine of this mill working well although the sails were long gone. The tower, the engine shed and engine are still there to this day. My other inspirations for Windmills came from Christmas presents which were cut out cardboard books in which you pressed out and folded, then glued the parts into shape to form a 3D model of a Windmill, plus the good old Meccano sets which you could build into a working model - (those were the days)

Here are 3 photos of my beloved Tutelina mill, Gt. Whelnetham also known as Tutelina or Clarke's Mill.



Early 50's



The 80's



Present day

This grade 2 listed conserved 4 storey Tower Mill was built in 1865. It was wind operated until 1910 and when the sails were removed in 1916, the Mill continued with engine power until the mid 60's. (my mother nursed and cared for Lady Clarke in her latter years until she passed away) By the late 13th century Windmills were common place. Their heyday was the early 19th century when almost 500 Windmills were working in Suffolk. Numbers declined. Slowly at first but rapidly after 1900, in the face of competition from large Steam powered Flour Mills. Today just 37 are left, and of these only half retain their machinery.

Water Mills – a lack of suitable rivers make Suffolk Water Mills scarcer than Windmills. Because they are larger, however a higher proportion has survived. Over 50 remain, about 1/3 of which are complete with their machinery. The use of Water power in this country dates back from the Roman days and by the time of the Domesday survey 178 mills are recorded, all used for Corn milling. The rise of the cloth industry brought water powered fulling mills. By the 16th century, the number of Water mills in Suffolk had reached its peak at 200, tailing away as the cloth industry declined. Due to the relatively low fall available on Suffolk's rivers, most mills used undershot or low breast shot wheels. Suffolk is home to 3 types of Windmill.

Post Mills – at the peak of Windmilling in Suffolk in the early 19th century were about 325 Post Mills. Only 7 remain, of which 2 have been rebuilt in recent years. Windmills need to face square into the wind, and Post Mills have the ability to turn their whole body – sails and milling machinery around a massive central post.

Tower Mills – these have a masonry tower and a cap which carries the sails. The cap revolving to face the wind. They were the 19th century import to Suffolk. Smock Mills – thought to have been invented by the Dutch in the late 16th century, these became fashionable in England in the mid-18th century. A variation on the Tower Mill, they have timber framed towers. In this area, they were also used for marsh drainage in the Fens and the Broads, driving scoop wheels instead of millstones.

Continued

Bardwell Windmill was the only Windmill in the whole country to sustain extensive damage in the great storm of October 1987. The first stage of the £70,000 repair started in September 1999. The friends of Bardwell Windmill formed to save the mill for posterity, envisaged getting up and running again for the Millennium

The earliest recorded Windmill in Suffolk is thought to have been one in Bury St Edmunds, built by Dean Herbert in 1191 for his own use. This infringed the manorial monopoly of the Abbey. It so angered Abbott Samson that he ordered its destruction – but Dean Herbert had it taken down first. It probably only stood for a few days. Everyone knows that mills grind corn. But Windmills were also used for drainage, seed dressing and sawing timber. In the 1800's Suffolk boasted Water powered mills for silk throwsting, paper making, oil manufacture, flax spinning, cement grinding and even oil leather dressing, glue boiling, and fellmongering. Mills today generate electricity – the nearest example is at Swaffham in Norfolk. These are those large wind turbines which are springing up everywhere these days and they are an eye-sore on the landscape.

Mills that move – Windmill removals were not uncommon in times gone by. A great white Post Mill body would approach down some country lane behind a gang of panting horses and struggling men. Once such removal in November 1835 was the transfer of 1 of the 2 tallest Post Mills in England from Sapiston to Honington. A visitor to the village pub insisted he had seen a larger mill elsewhere. Locals replied ah, well that must have been the crate they bought this one in. Sadly, only the round house remains at Honington. Windmills were particularly at risk during gales, the friction generated by the wind on the sails was enough to cause sparks leading to instant and devastating fires. The favourite pet of the miller at Stanton Post Mill was Rosie a King Charles Spaniel. In 1891 she fell to her death from the steps at the rear of the mill. The miller couldn't bear to part with her and so had her stuffed.

Rosie is still in fine form and owned today by a farmer in Wingfield. The Post Mill at Stanton enjoyed a good reputation for flour. In the late 19th century it supplied the famous tea clipper Cutty-Sark. Thelnetham Windmill was awarded the prize for best flour by Raymond Blanc in the organic food awards 1997 and 1999.



Both Stanton

Bardwell



Pakenham Mill

Pakenham Water Mill

Stanton Windmill is a Post Mill, 1 in which the whole of the super structure complete with sails and all machinery turns on top of a single post. There are about 50 Post mills left in England of which 7 are in Suffolk. The Windmill bears the date 1751, boldly cut into a major timber and most fairly certainly the building date. It was moved here from an unknown location around 1818. It worked as a Corn mill until 1918 after which the millers (the Bryant family) who moved to a larger mill at Pakenham. After a public appeal for funds in 1938 the mill was repaired in 1939-41 and after this worked for another 10 years or so, for farm use only. By the mid 1950's the mill was going derelict again

Continued

After many years of neglect a previous owner, Richard Duke, aided by friends and mill enthusiasts from Suffolk mill group once more repaired the mill from 1986 to 1993. From 1995 until 2002 Peter and Melanie Dolman owned the mill and continued the work with a grant aid from English Heritage and the local council. Dominic and Linda Grixti, the current owners, now maintain the mill and are continuing with the restoration. Bardwell also has a Watermill which alas is no longer operational. This puts the village in a very fortuitous position of having 2 mills – Water and Windmill and this at a time when few villages have any mills remaining at all. Bardwell Windmill dates from 1820, when it was said it to be have been built from parts of a mill brought from neighbouring Ixworth. It worked by wind power until 1925 and then by oil engine until 1941. Although restored to full working order in the 1980's its sails were torn off in the storm of October 1987. Milling is carried out with the help of Oliver the steam engine and is still in working order today. Pakenham Windmill – owned for a century by the Bryant family, was erected in 1830. The mill was used regularly until the 1950's. Although it no longer grinds, the sails turn and the family are always happy for interested visitors to take a look.

Pakenham is last parish in England to retain a working Windmill and Watermill as the village sign proudly proclaims. The Watermill worked regularly until 1974, it carries a date stone 1814 but the foundations of a Tudor mill are preserved beneath. The Watermill drives 3 pairs of millstones. Look for the large blackstone oil engine (1904) and the Tattersall mid jet roller mill. The 18th century Watermill, the last working Watermill in Suffolk is now owned by the Suffolk Building Preservation Trust. Water from the Pakenham fens collects in the beautiful mill pond to turn the 16ft high iron water wheel that drives the mill stones which turn the wheat into flour. In the former miller's house next door you can see the old kitchen with its 18th century brewing vat and bread oven.

Drinkstone consist of a Post mill grade 1 listed and Smock mill grade 2 listed. The mills were known as The Clovers Mills as they were always worked by the Clover family. The Post mill was an open trestle Post mill, a brick and flint round house was added in 1830. The mill was originally powered by common sails, spring sails were fitted during the 19th century and the mill was finally worked with 1 pair of spring and 1 pair of common sails. The mill has a wooden wind shaft with a cast iron pole end, which was fitted by the millwright C. Sillitoe of Long Melford in the 1920's, an air brake was fitted to the sails but the scheme was not successful and was abandoned, winding was by a tail pole until the 1940's, when the fantail carriage from Barley Green mill Stradbroke was fitted. This was worked by a winch to start with and the fantail from Thurston mill was fitted during World War 11. The fantail from Woolpit mill was fitted in 1963. The frame of the mill shows its age, there being no girts. The body has been extended in the breast and the tail, and the mill has been reconstructed so the original breast of the mill is the tail. The mill has 2 pairs of mill stones. The Smock mill was built in 1780 on a horse mill which had been in existence in 1689. The mill is a 2 storey Smock mill on a single storey base. The mill has a pepper pot cap which was originally winded by a chain and wheel, a fantail being added towards the end of its working life. The mill was last worked with a pair of common sails and a pair of spring sails. The wind shaft was a wooden one, the millstones were supported on a hurst frame and an arrangement found normally in a Water mill. The nearest mill to Tostock are of course Drinkstone but however, the big million-dollar question is – Has there ever been a mill in Tostock ?? The answer is yes. Once upon a time there might have been 2 mills. But first of all I would like to thank and give credit to the Tostock Past and Present Society for giving me the answer in which I found printed in their published manual. The answer was mentioned from the records of Sibton Abbey in East Suffolk. That the Abbot of Sibton holding one acre, a Windmill and a house in Tostock around the time of 1212 - 1229. It is believed the mill stood on site of the present playing field and village hall. It is thought there was also a Water mill in the vicinity of Tostock Old Hall which is near to the river. It would be absolutely great if anyone could come up with some pictures or drawings of what they may have looked like. I thought I would end with a sense of humour during this third lockdown and troubled times



Post Mill



Smock Mill



Chitty Chitty. Bang Bang
Chitty Chitty, Bang Bang I Love you

TOSTOCK PARISH COUNCIL

First of all – **a hopeful New Year to you all!** Here in Tostock we are lucky that our local GP surgery has been vaccinating since December, and the over 80's have been protected. I expect there will be a small hiatus while they concentrate on health workers and care home residents, but I am sure it will not be long before other groups start getting called for appointments. Although this will not put us back to 'normal' I am sure we will see restrictions lifting to some degree as more and more of the vulnerable groups across the country are protected.

Over the past couple of months, I have spoken to quite a few residents who have various concerns and some of these seem to be raised more often than others.

One of these is anti-social behaviour / bonfires, which can be addressed by using the Environmental Health reporting tool (www.midsuffolk.gov.uk/environment/).

Similarly, the issues of potholes, overhanging trees and any other road / roadside issues can be raised on the Highways reporting tool (www.suffolk.gov.uk/roads-and-transport/).

Both these tools are quite easy to use, but if you have problems you can contact a parish councillor for assistance.

Another concern raised by several residents is the state of the Green and the Leys, with the edges eroded by vehicles passing at narrow points, and pulling off the roads to park. This is a difficult problem to solve and it may mean considering some professional advice for ways to limit damage. The Parish Council erected a sign stating 'No Parking on The Green' in 2017, after a decision to ban it prior to this. It should be noted that 'The Green' includes the area in front of the Croft, and all the houses on the south side of the main green.

Obviously when construction work is being undertaken it is necessary for both vehicles and skips to be parked, but there should be agreement with the council to repair any damage that may be caused by this.

Finally, the flow chart opposite indicated the steps that should be taken when considering removing or undertaking major trimming of trees within the conservation area. Also, it is likely that any work undertaken on the exterior of houses within this area will require planning permission. Tostock conservation area extends from south of the village hall on Norton Road to Beyton Road (including Ticehurst) and back via the Leys and Leys Road. It covers the Green and Church Road from the Green to the junction with New Road and up Flatts Lane as far as the footpath. (A definitive map of the conservation area can be supplied by the Parish Council if required)

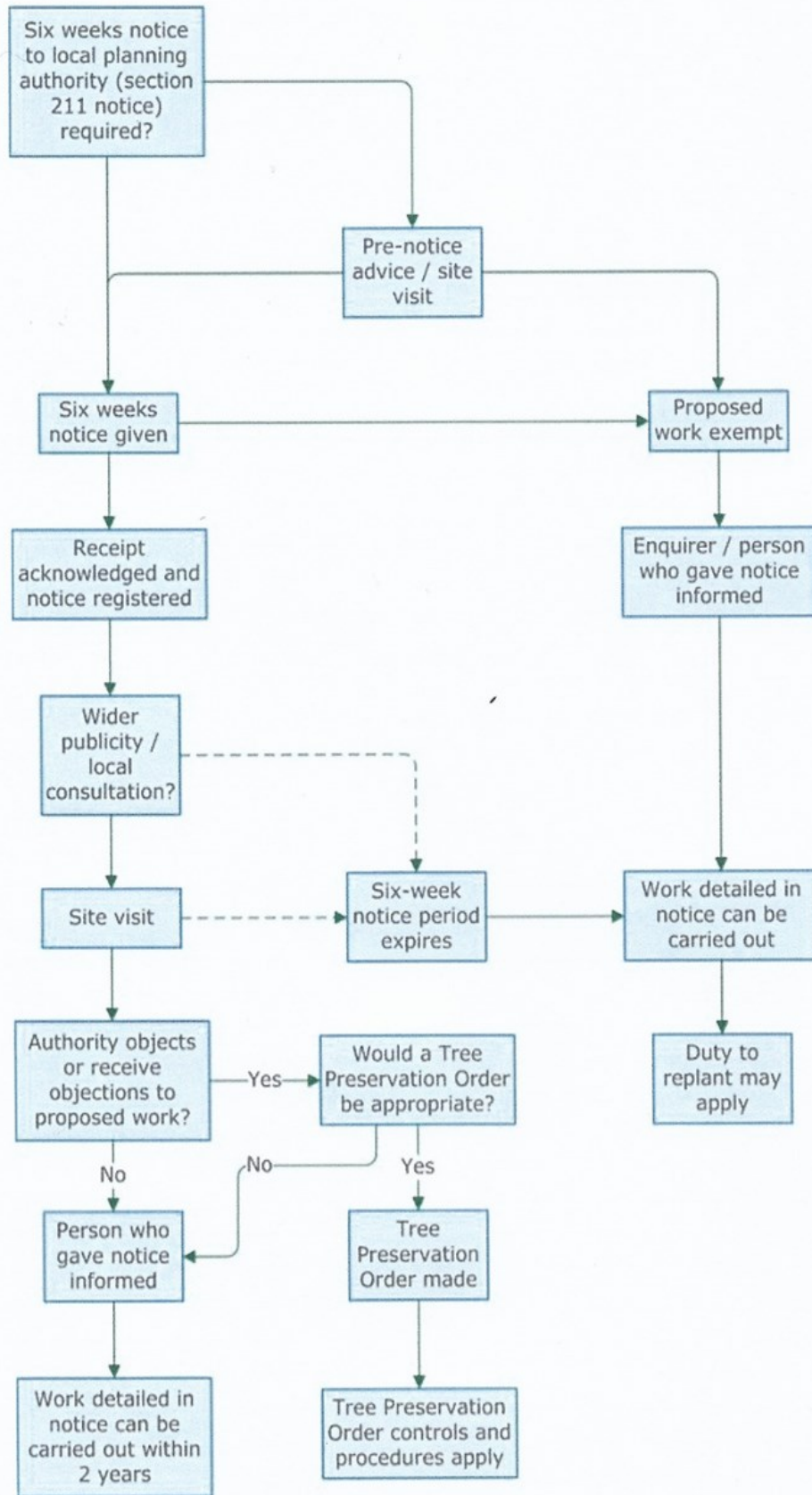
Finally, please feel that you can contact any councillor if you have a concern or wish to report a problem.

We may not be able to help directly but we can almost certainly point you in the right direction for some assistance.

Pip Fletcher – Chair, Tostock Parish Council

Julian Kearsley – Vice-Chair, Tostock Parish Council

Flowchart 5: Notices for work to trees in a conservation area



Tostock Village Hall News

February & March 2021

A Happy New Year from the Tostock Village Hall Committee!

We are sure that there is a brighter year ahead for us all and very much hope that 2021 will see a safe return to many of the aspects of Village life that we have missed so much.

The Village Hall Committee held a zoom catch up meeting in early January 2021 and even if we could not all be together in person, it was lovely to see everyone virtually and start planning for the year ahead.



Tostock Village Hall remains closed during January & February National Lockdown

At the time of writing this newsletter, the hall has had to remain closed in line with the current Government guidelines. The hall will re-open as soon as we are safely able to do so.



Please complete the **Village Hall Survey!**
Complete & return the questionnaire included in this Chronicle to be in with a chance of WINNING A £50 JOHN LEWIS VOUCHER.

Simply turn over the page to find the survey, pull out the four page centre-spread and follow instructions on how to return etc.

The prize draw is open to Tostock Residents aged 16 years or over who return a fully completed survey **before 28th Feb 2021**.
Maximum two entries per household.

IMPORTANT NEW NOTICE

PLEASE **KEEP YOUR DOGS ON LEADS** WHEN WALKING THROUGH THE VILLAGE HALL'S PATHS & PLAYING FIELDS.

A number of concerns have recently been raised to the Village Hall Committee regarding the walking of dogs on the Village Hall Playing Fields.

Having carefully considered these issues, the Village Hall Committee has voted in favour of introducing a notice for all dog walkers to keep their dogs on leads whilst using the Village Hall's paths & fields.

We would therefore ask all dog-walkers to adhere to this with immediate effect.

Keeping your dog on a lead in our playing fields and around the hall, will mean a safer and cleaner shared outdoor space. Not only do current social distancing guidelines dictate that it is best practice for all dogs to remain on leads, but this is also needed due to the increased usage of our basketball courts, football pitches, playground area, outdoor gym equipment and playing fields. It has also been found that areas where dogs are kept on leads, tend to be cleaner as owners are more vigilant in clearing up after their dogs.

Many thanks to all dog owners for respecting this new notice, and also for conscientiously cleaning up after their pets and helping to maintain a space which can be enjoyed by all.



Tostock Village Hall Survey

Have **YOUR** say about **YOUR** Village Hall

Complete & return this questionnaire to be in with a chance of WINNING A £50 JOHN LEWIS VOUCHER

Further details on how to enter the Prize Drawer, including the T&C's for entry, are at the end of the survey.

Tostock Village Hall was built in 1974. The **Village Hall Committee** is undertaking a review of the Hall to identify future improvements. Your views are needed to help in deciding on the improvements needed to enhance the Village Hall.

PLEASE RETURN THE QUESTIONNAIRE BY SUNDAY 28th FEBRUARY 2021.

Completed surveys should be returned to **Tostock Village Hall's new postbox**, situated by the main entrance to the Village Hall. Alternatively a member of the Tostock Village Hall Committee would be happy to agree an appropriate time to collect the survey, please call 01359 272633 to request this. For any further queries, including requests for extra copies of the questionnaire, please contact the above number or email: hannahgracejones@hotmail.com

Question 1) How often, before the first lockdown in March 2020, did you use the Village Hall?

Weekly			Monthly	
Quarterly			Once a year	
Twice a year			Never	

Question 2) In the year before the first lockdown (i.e. between March 2019 – March 2020), have you hired or attended any of the events below in Tostock Village Hall?

Event	Hired	Attended	Event (continued)	Hired	Attended
Wedding Reception			Brownies/Rainbow		
Private Parties (eg Birthday parties)			Christmas Fayre		
Coffee Mornings			Parish Council Meetings		
Church Functions (incl. Harvest Supper)			Flower, Fruit & Vegetable Show		
Past and Present Society			Funeral Teas		
Bowls Club			Village Quiz Nights		
Toddlers			Ceilidh Dancing		
Fundraising events (eg Casino or Horse Racing nights)			Family Fundraising events (e.g. Toad Racing night)		

Events not mentioned above?

Question 3) To what extent do you Agree or Disagree with the following statements?

Please tick in only ONE column for each statement;

The Village Hall would benefit from.....	Agree	Agree slightly	Neither agree or disagree	Disagree slightly	Disagree
More space to hold a greater variety of activities					
Modernised toilets					
Better insulation and an improved heating system					
A larger separate meeting/committee/multi-function room					
A larger improved reception area.					
An improved car park area					
Improving the external appearance of the building					
Better Lighting					
Better acoustics					
Improved access for disabled people					
The removal of the stage area					
Better storage facilities					

QUESTION 4) What types of activities would you or someone in your household be interested in attending at the Village Hall, once Covid-19 restrictions allow?

Please tick all that apply & where possible please provide more detail in the box below.

Lunch club		Baby/toddler activities		Social events/clubs		
Dance classes		Senior citizen's group		Exercise/fitness classes		
Table Tennis club		Adult education classes		Social club/Pop up pub		
Youth club		After school activities		Arts & crafts		
Information Technology		Performing Arts/Drama		Parent/childminder support group		
Community cinema		Library/book/jigsaw swap		Exhibitions/shows e.g. flower/craft show		
Music Events		Other? Please specify....				

Where possible, please give more specifics to your answers above:

QUESTION 5) Can you tell us what activities/groups you attend outside the village, again, thinking back to times before the first lockdown in March 2020?

--

QUESTION 6) What prevents you from attending this kind of activity in Tostock?

No activity of this type in the village		Too expensive	
Venue is not suitable		Prefer to attend activities outside the village	
Facilities are better elsewhere		Other? <i>Please specify...</i>	

QUESTION 7) Would you be likely to hire the Village Hall for any of the following, once Covid-19 restrictions allow?

Private functions		Fundraising event, jumble sale etc.	
Meetings		Conferences	
Workshops		Training Sessions	
Office Party			
Other? <i>Please specify...</i>			

QUESTION 8) Do you live in Tostock?

Yes		No	
-----	--	----	--

If you have any other suggestions, please use this box or continue on a separate sheet

TO WIN a £50 JOHN LEWIS VOUCHER – please outline your contact detail below;

Name:		Tel:	
		Email:	

COMPLIANCE WITH THE DATA PROTECTION ACT:

Please note the information provided by you in this questionnaire will be used for research purposes only. It will not be used in a manner which would allow identification of your Individual responses.

PRIZE DRAWER Terms & Conditions:

The contact details provided above will be used for the sole purpose of entering the completed survey into a draw to win one £50 John Lewis voucher. The drawer is only open to Tostock Residents aged 16 years or over who return a fully completed survey before Sunday, 28th February 2021. A maximum of 2 applications per household, completed by different members of that household (aged over 16 years), may be entered into the drawer. Members of the Village Hall Committee are not eligible to participate in the drawer.

Thank you for completing this questionnaire – your views are important and very much appreciated.



Outdoor Gym Equipment in the Village Hall Playing Field

It was great to see so many people enjoying the new Outdoor Gym Equipment when it re-opened in December. Unfortunately, our current National Lockdown Restrictions mean that it has had to be closed again, but as soon as this situation changes, the orange fencing will be removed.

Once the outdoor gym is able to be re-opened, please can all users please ensure that they follow the safety guidelines outlined below.

SAFETY NOTICE FOR ALL USERS OF THE OUTDOOR GYM

If you are in any doubt whatsoever about performing physical exercise, please consult a Doctor prior to doing so.

The equipment is intended for use by adults and children above 140cm tall.

In the interest of Safety, please read all safety & user instructions located on each item of equipment before use, and use them within your limits.

STOP using the equipment immediately should you feel any discomfort at all.

The outdoor gym equipment is inspected for safety on a regular basis.

Please report any damage or accidents to the Tostock Village Hall Committee.

The Tostock Village Hall Committee accepts no liability for injury, loss or damage resulting from the use of this equipment.

Please respect the area and ensure it is used for its intended purpose only.



Village Hall Wild Flower Meadow

Would you or your family like to help sow this year's seeds?

It is time to plant more seeds so that this year's wild flower meadow can continue to flourish.

If you or your family would like to be involved in planting a small amount of the wild flower seed, please let us know by the end of February.

(01359 272633 or hannahgracejones@hotmail.com)

TOSTOCK PLAYGROUND IS ABLE TO CONTINUE TO STAY OPEN
Please ensure your children follow social distancing & safety guidelines to help keep everyone covid-19 secure.

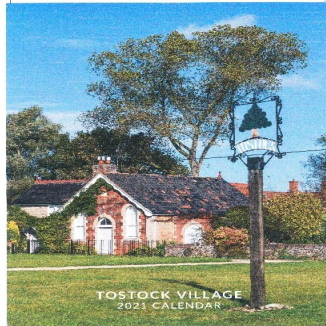


HOLD THE DATE: The next Tostock Art Show

Is being planned to take place from Saturday, 19th – Sunday 20th June 2021.

TOSTOCK CALENDAR 2021

Thank you to everyone who bought a calendar and also to those who helped to sell them. We managed to sell 114 calendars which is an increase on last year and has raised **£309** for the church of which £9 are donations from several people.



There are 5 remaining calendars left to sell at £6 each. So, if you are wanting one please contact me:
Jim Langlois, Pynnor, Norton Road, Tostock. Tel No 01359 270456.

Snippets from the past...

Excerpt from Chronicle No 16. August 1961

The Royal Visit. Her Majesty Queen Elizabeth II, on her way from Stowmarket to Bury St Edmunds, passed Tostock corner, near Tostock House, at about 4.15 on the afternoon of Friday 21st July. The day was fine. Mr A. Henderson had erected a flagstaff, and provided a farm waggon, flags and decorations; Mr R. Mulley had lent benches; and about 200 people assembled to greet Her Majesty. On seeing our Tostock party the chauffeur applied his brakes for a moment, and then the car sped on. But everyone had a good view and we cheered.

A President or a Premier may
Be a clever chap. Well, I daresay.
But I'd rather cheer her any day
Than Mr K.

Mr K is Nikita Khrushchev who led the Soviet Union from 1958 to 1964.

Excerpt from Chronicle No 20. September 1962

Two Pleasant Visitors. One day in June two young men in their teens, with large packs on their backs, walked up the drive of Tostock Old Hall and asked if they might camp for the night. They had their tent and food and cooking things; all they wanted was a bucket of water. They explained that they were competing for the Duke of Edinburgh Award. Of course they were welcomed. Next morning they left at cock crow leaving behind a little note for their host, thanking him for kind hospitality and saying how sorry they were they could not wait to thank in person, signed – Ivan Buckle and Dixie Dykes. Their camping site was left just as they had found it; one could not have told that anyone spent the night there.



St Andrew's Church Tostock

**(Benefice of Pakenham, Norton & Tostock with Great Ashfield,
Hunston & Stowlangtoft)**

Rector: Revd Katherine Valentine Tel 01359 235095

Email: kavalentine677@gmail.com (new email!)



Website: for more details of all our churches - including Tostock - see the national Church of England website www.achurchnearyou.com

Our benefice Church magazine is also available online at www.vcnews.org.uk

Church News February 2021

BENEFICE CHURCH SERVICES & OPENING TIMES

Please find below details of the services we plan to hold in February, **if places of worship are permitted to remain open for services!** Norton, Tostock & Pakenham will continue to be open for private prayer Sundays and Wednesdays 10am-4pm, and Great Ashfield Sundays only 10am-4pm. It is not possible to plan for March at the moment, but our aim will be to continue to provide one service in the benefice each Sunday, as long as places of worship can remain open. Please see local church notice boards for information, or feel free to contact me or your churchwardens.

FEBRUARY

3rd Wednesday 10am Holy Communion Tostock

7TH PRESENTATION OF CHRIST 10am Family@Church CANDLEMAS Pakenham

14TH SUNDAY NEXT BEFORE LENT 10am Morning Worship Tostock

17th Ash Wednesday 10am Holy Communion Norton

21ST 1ST SUNDAY OF LENT 10am Benefice Holy Communion Norton

28TH 2ND SUNDAY OF LENT 10am Benefice Holy Communion Tostock

SAFETY PRECAUTIONS IN OUR BUILDINGS

As you enter the building please use your own hand sanitisers if possible, but if not hand sanitisers for your use are available in the church. Please replace them afterwards. It's important to respect other people's space by keeping a 2m distance and note that not all areas of the church may be accessible. Please follow distancing and safety notices inside each building, including the wearing of face coverings.

Church services are also still available for you to join in remotely via the Cathedral website: <https://stedscathedral.org> or the Bishops are live streaming Daily Prayer and you can link to this via the Diocesan website: <https://www.cofesuffolk.org/>

Our benefice **You Tube Channel** is still running with a weekly reflection for you to watch and join in with. Go to You Tube and search for 'Pakenham Benefice' where you should find the latest services, reflections and music that we have put up.

Revd Katherine Valentine.

PRAYERS FOR FEBRUARY for you to use at home.

Everything is subject to change at the moment, but be assured that the people of all our villages are in my prayers, and that will not change. We can all be constant in our prayers for all those we know in any kind of trouble, facing any kind of challenge, and needing any kind of help. with every blessing, Katherine.

Continued

Spring

Thank you Father, that spring is a picture of your beauty.

Thank you for flowers and sunshine, and the spring that brings new life.

I pray that you would cleanse us, so that we are fresh and new in you each day. Amen.

(by Kathryn Davies, Aged 12)

Lent

We thank you Father, for those days in the desert when,
through prayer and fasting, Jesus discovered your will for his life
and overcame the temptations of the evil one.

Help us during these days of Lent,
to come close to you and to listen to your voice.

Give us strength to overcome the temptation to please ourselves
and live life without you. Teach us your way, for Jesus' sake, Amen.

For those in any kind of need

Christ has no body now on earth but yours,
no hands but yours;
yours are the eyes
through which he looks with compassion on the world,
yours are the feet
with which he is to go about doing good,
and yours are the hands
with which he is to bless us now. Amen.

St Teresa of Avila

NEWS FROM

ST ANDREWS CHURCH



A letter of thanks has been received from the Bury Refuge, thanking us for the wonderful donations of gifts for the children and mothers living at the Refuge at Christmas. Usually, the parcels are brought to the Carol Service, but this year was more difficult, with two addresses for items to be left and one morning in Church. But there was a wonderful response from Tostock people again, in spite of the difficult times we are living through – thank you to all who contributed. Like all charities, the Refuge has many people needing it's support at the moment, so any help we can give is much appreciated.

The Service of Morning Worship on Christmas Day was much appreciated by the congregation and thanks to some brave volunteers, we even had a choir to sing the Carols!
Hopefully next Christmas we shall all be able to join in. Thanks to Barney for leading the Service.

If anyone would like to sponsor the Church Flood-lights this year, please contact Jeanne O'Reilly.
One week's sponsorship costs £5, one month £20.
This is a good way to celebrate Birthdays, or Anniversaries.

Jeanne O'Reilly

EXPLORERS

Shackleton is the local Explorer Scout unit for young people aged 14-18 years. We offer opportunities:

- to take part in the Duke of Edinburgh Award scheme through scouting
- to volunteer with younger scouting sections and/or complete the nationally-recognised Young Leader Training Scheme
- to achieve top scouting awards
- or just to meet other young people and achieve something new

The Unit restarted in September 2020 with just a couple of Explorers, but since then numbers have been going up. Young people of any gender can join Explorers from 13½. Our young people attend 6 different local schools and some of them have never met face-to-face, but they are working together to plan for when they can.

We currently meet online, usually on Wednesday evenings, and we are using the opportunity to improve our scouting skills (map-reading, navigation, expedition planning, international activities, young leader training) and to get ahead with the parts of the Duke of Edinburgh scheme we can do at home, while planning for an expedition. Once we can safely get outside, we will be out most of the time.

2020 was a challenging year for scouting, as for everyone else. But at Shackleton we had a camp-out (in gardens, with pet dog or sibling or both), cook-ins, escape rooms, games, virtual campfires and visits to air museums, shared events with scouts in Yorkshire, East Sussex and Canada.

Life has changed for all of us – for some in harsh ways - and it will continue to be strange for some time to come. But if you have (or are) a young person hanging around, looking for some company, and something positive to do and look forward to, get in touch.

Likewise, if you are an adult feeling the need of a focus, or just wanting to give something back, get in touch. Going forward, we will need all sorts of adults for all levels of commitment from the occasional check of accounts to all-out kayaking star (training provided).

Julia Norman, Shackleton Explorer Unit, shackleton@btinternet.com





Gaya Make Up Artist

Located in the lovely quaint village of Tostock. Certified with over 20 years of experience. I am here to help you look more beautiful and fresher, nothing better than a perk me up for that special occasion!

Parish free, Vegas and Cruelty free makeup available. Make an appointment Now!

Gaya

Hayman

07734713992 or find me on Facebook!

HOURS OF OPERATION

Monday, Tuesday - Wednesday
9am - 2pm - 3pm - 8pm
Thursday, Friday
9am - 2pm
Saturday 11am - 3pm

Services	Adult	Student
Make Over	£40	£30
Eye Brow Threading	£15	£10
Face Threading	£25	£25
Lashlift & Tint	£5	£5
Tint	£5	£5

Hair blow dry!
plaits/braids/buns £15 - £100
Depending on hair length.

Bridal Make Up £80 - £250
(Depending on location and intricacy of the hair and makeup style you would like. Trials are 30% of cost)

Face painting £3 - £10
Depending on the Event & size of facepaint, Halloween, summer fair etc.

Gaya Make Up Artist

07734713992

Stroudley Garage

Norton Road, Tostock, IP31 9FF

goyamakeup@gmail.com

facebook: Gaya Make Up Artist

CRACKNELLS GARAGE of Thurston

NEW GROCERY/CONVENIENCE STORE

Local Meat, Fruit & Veg
NEWSPAPERS • LOTTERY • FRESHLY BAKED BREAD
Pet Food, Bird Food, Coal, Logs, Kindling
Water Softener Salt Tablets & Blocks

OPEN 7 DAYS FOR FUEL & SHOP

All usual workshop facilities:
MOTs • SERVICING • REPAIRS

01359 270256 www.cracknellsgarage.co.uk

Rothwell's Carpet & Stone Floor Cleaning

Carpet Cleaning & Stone Floor, Upholstery, Rugs

A few points that make us stand out,

Rothwell's has been in business since 1993

We're an honest local family firm.

Our large truck mounted machines mean more cleaning & drying power for the best results possible.

Members of both the NCCA and TACCA.

We will move the furniture.

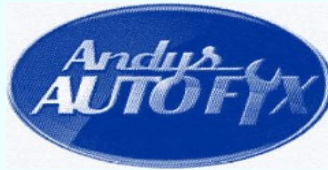
100% satisfaction or it's FREE.

Call Oliver and Max Campbell

for expert help today.

www.rothwells.biz

01638 428 060



The local solution to your motoring

Open 6 days a week

MOT Testing - Tyres - Exhausts -
Servicing Bulbs - Diagnostics - Clutches
Cambelts - Batteries - Wipers
Mechanical Repairs - Wheel Alignment
Loan Car

**Friendly and Qualified Staff
and much more!**

Credit and Debit cards accepted
01359-230097

Andy's Auto Fix, Woolpit Road,
Norton, IP31 3LU

CHIMNEY SWEEP

ECO SWEEP CHIMNEY SERVICES

- NEW POWER SWEEPING METHOD USED FOR A MORE THOROUGH CHIMNEY CLEAN THAN BRUSHES.
- INDUSTRIAL HEPA FILTERED VACUUM.
- FULLY INSURED.
- INSURANCE RECOGNIZED CERTIFICATES ISSUED.
- SPOTLESS, RELIABLE AND FRIENDLY SERVICE.
- ALL CHIMNEYS, WOODBURNERS, AGA, BOILER FLUES SWEEPED.
- GUILD OF MASTER SWEEPS CERTIFICATED MEMBER.



TEL. 01359 232335

Original Painting And sculpture

at affordable prices by Tostock-based artist

Charlotte Kearsley
07525 412343

I paint in oils, acrylics and watercolours, and sculpt in limestone to

Landscapes, Portraits of adults, children, and pets, flower paintings and reproductions of famous artworks

all available Prices start £150

Please see website for samples of work and customer testimonials

www.charlottekearsleyartist.com

info@charlottkearsleyartist.com

APN. WARDROBES

MADE TO MEASURE SLIDING WARDROBE SYSTEMS

SUPPLIED & FITTED

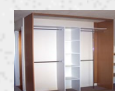


MAKE 100% USE OF SPACE
ANGLED CEILINGS
10 YEAR GUARANTEE

A WIDE RANGE OF FINISHES
MATCHING FURNITURE

WALL TO WALL
IDEAL FOR HOME OFFICE
FLOOR TO CEILING

BESPOKE INTERIORS TO SUIT YOUR NEEDS



CONTACT

ANDY NICE

For a free no obligation quote

PHONE: 01359 271727 MOB: 07747 846562

WEBSITE: www.apnwardrobes.co.uk

EMAIL: andynice@btinternet.com

Country living



Fornham House has extensive gardens, with long windy paths around the home. The gardens have lovely private areas for families to meet and staff supporting residents outside. Other garden areas will be further developed with residents taking an active part.

Make this your new home

Brand new purpose built extension with 17 en-suite rooms

The design is beautiful, spacious yet intimate. It is safe, communal living at its best, with emphasis on individual care needs. Every room has a view. The corridors with high ceilings, gives accessibility from every area in the home, and allows the resident to walk freely and safely. Access to the very large decked area is gained through doors leading from the dining area.

Doors in the corridor and lounge gives access to a small intimate indoor garden. The residents will develop this garden further. This is where many residents will have the opportunity to

potter at their hearts content. The beautiful soft colours of the walls and carpets will compliment all of your personal items, personalising your space.

- Stylish communal lounges and dining
- Dementia friendly environment will be further developed by the people who are going to live in this community
- Extensive decked area and internal courtyard
- Modern fittings yet still in keeping with the traditional setting of the home



Fornham House is situated in the picturesque village of Fornham St Martin, just a couple of miles from the centre of Bury St Edmunds.

Facilities Available

- 73 bedrooms
- Popular residential home, offering high quality care and support
- In-house hairdressing salon offering usual services plus manicures and hand massages
- Caters for special dietary requirements
- Beautiful extensive gardens
- Large day rooms
- Well located to enjoy amenities in Bury St Edmunds



We are excited to introduce our new visiting pod so we can welcome and meet our visitors safely

Together we **respect**, with **compassion** we care, through **commitment** we achieve



Fornham House
Part of the Healthcare Homes Group



Fornham St Martin, Bury St Edmunds, Suffolk, IP31 1SR. Tel: 01284 768327

HealthcareHomes healthcarehomes.co.uk

Greeting Cards



I have a selection of Suffolk and Tostock local scenes printed onto A6 Greeting Cards which normally would cost £2.50 each. But whilst we are in **lockdown** conditions, I have **reduced** the cost to £2.00. They are all my pictures, taken over the last few years.

Each card is individually wrapped in a sealed cellophane wrapper, with a white envelope and are blank allowing you to add your own personal greeting.

If you are interested please contact me for a full list:

Jim Langlois, Pynnor, Norton Road, Tostock

Tel No: 01359 270456

jimlanglois@btinternet.com

TOSTOCK ANIMAL PARKS

Dear kind people of Tostock,
We enjoy very much all the apples, courgettes etc you have been bringing for us at Tostock Animal Parks. They taste lovely and also help to keep us warm from inside. Please keep them coming our way.

We also very much look forward to our Xmas/New Year treats, namely your Xmas trees. They last for weeks in our paddocks. Please don't chop of the branches from the main trunk, as we need it as counter weight when pulling off the branches to eat – you see, we camelids, unlike humans, only have bottom teeth. Keep warm and stay healthy
From Iliana, the Head Llama Girl (my photo is also attached)



Tostock Animal Parks